

Spearhead Multi Cut 650 Proline Topper

£25,500.00 ex VAT

Stock No. 11128455

Year Status

2024

In Stock

Description

When you need fast, intensive output, Multicut 650 Pro-line won't let you down. Clearing over eight hectares per hour, it powers through your workload.

Five rotors, each with our renowned six-blade Starcut system, achieve far more than any other 6.3 metre mower. And with five rotor gearboxes, all with slip clutch protection (plus our 7-year warranty), this top performing Multicut delivers your every demand.

Your comfort is guaranteed thanks to hydragas suspension, a walking axle, and wider wheels. Plus, folding wings make road journeys easy.

- Rapid output guaranteed.
- 30 steel blades over five rotors.
- Endless features ensure a smooth ride.

Machine weight*:3300kg / 7275lbs

Hitch: Multi-positional drawbar

Cutting width:6.28m / 20' 7"

Working machine width:6.47m / 21' 3"

Transport machine width:2.70m / 8' 10"

Maximum working length:5.07m / 16' 8"

Transport length:4.93m / 16' 3"

Deck height**:0.23m / 9"

Transport height:2.90m / 9' 7"

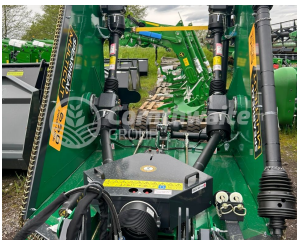
Cutting height:25mm – 210mm (1" – 8 1/4")

Cutting capacity:100mm / 4"

Wing working angles:45° up/15° down

Recommended tractor HP:90hp / 67kW

Power take-off speed:1000 rpm



Cornthwaite
GROUP

Nantwich

Nantwich,
Cheshire CW5 5PJ
01270 624141

**Bispham
Green**

Ormskirk,
Lancashire L40 3SB
01704 822343

Kendal

Milnthorpe,
Cumbria LA7 7FP
01539 756367

Carlisle

Carlisle,
Cumbria CA1 2UR
01228 586816

Dumfries

Dumfries,
Scotland DG1 3UB
01387 214242

**Central
Number**

01704 790008